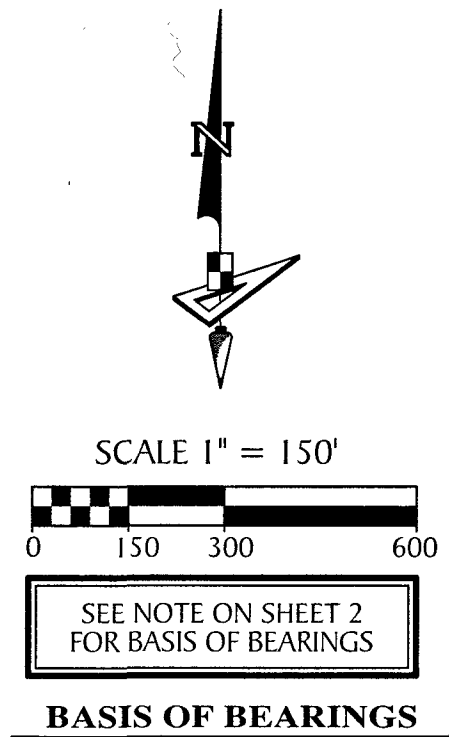


PERSIMMON BOULEVARD EAST - PLAT 6

BEING A PORTION OF SECTION 5, TOWNSHIP 43 SOUTH, RANGE 41 EAST,
AND SECTION 8, TOWNSHIP 43 SOUTH, RANGE 41 EAST
CITY OF WESTLAKE, PALM BEACH COUNTY, FLORIDA

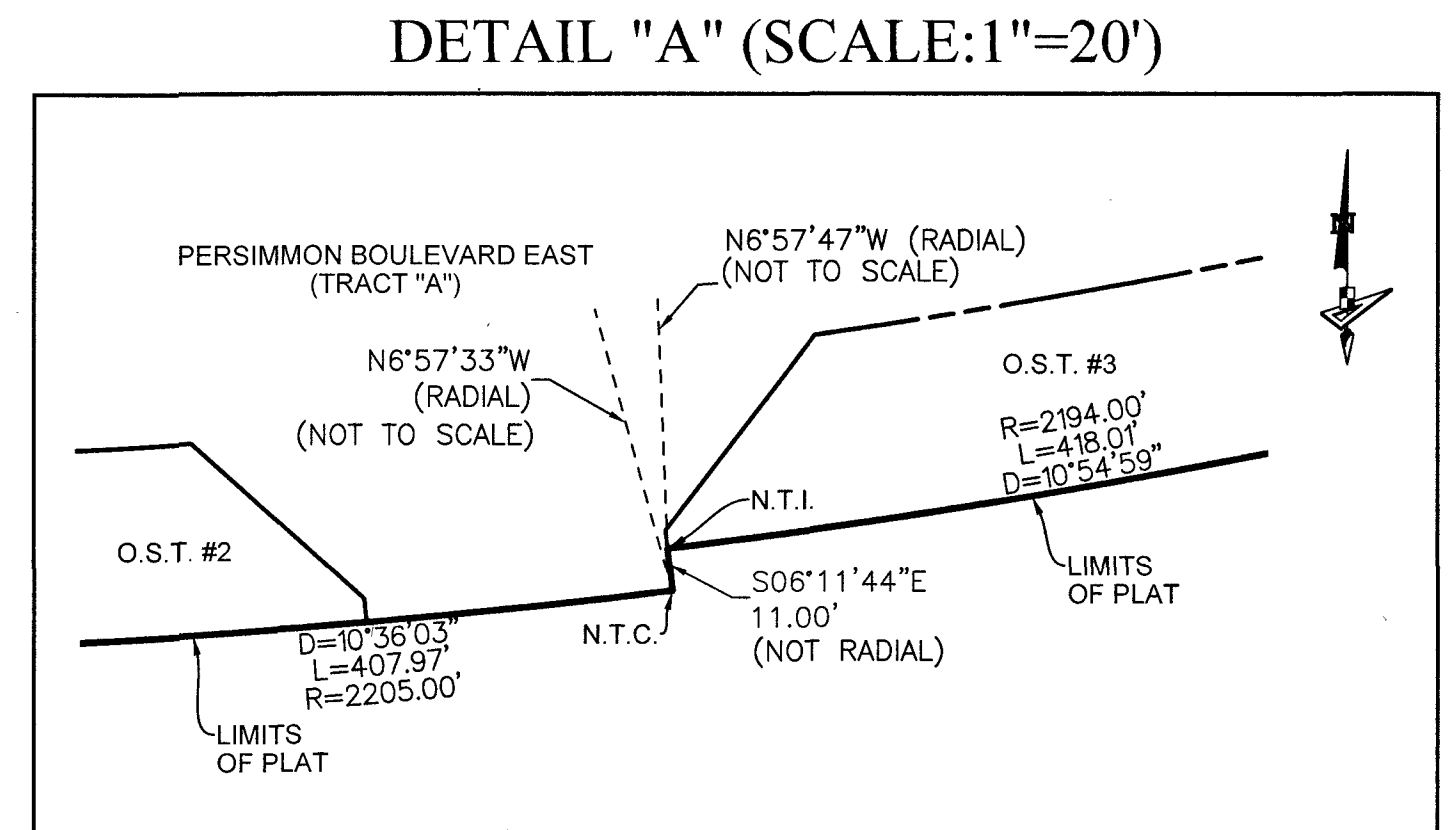
184



BASIS OF BEARINGS

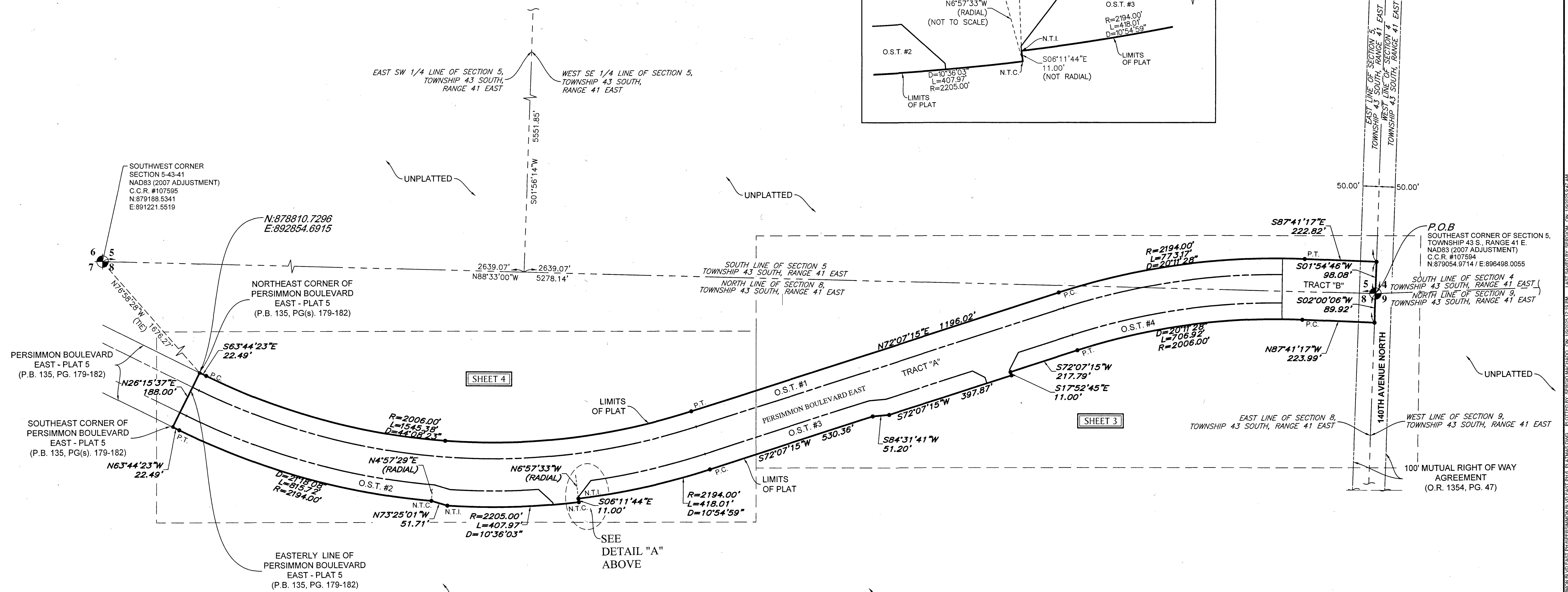
BEARINGS SHOWN HEREON ARE BASED ON THE EAST LINE OF SECTION 5, TOWNSHIP 43 SOUTH, RANGE 41 EAST, HAVING A GRID BEARING OF S.01°54'48"W. (MEASURED). BEARINGS SHOWN HEREON, REFER TO THE STATE PLANE COORDINATE SYSTEM, NORTH AMERICA DATUM OF 1983 (NAD 83 - 07) FOR THE EAST ZONE OF FLORIDA. SAID BASIS OF BEARING IS THE SAME IN THE NORTH AMERICAN DATUM OF 1983 (NAD 83 - '90).

P.O.B. ----- POINT OF BEGINNING	P.B.C. ----- PALM BEACH COUNTY	N.T.I. ----- NON-TANGENT INTERSECTION	LB ----- LICENSE BUSINESS
P.O.C. ----- POINT OF COMMENCEMENT	U.E. ----- UTILITY EASEMENT	N.T.C. ----- NON-TANGENT CURVATURE	S.I.D. ----- SEMINOLE IMPROVEMENT DISTRICT
P.B. ----- PLAT BOOK	D.E. ----- DRAINAGE EASEMENT	P.C. ----- POINT OF CURVATURE	PRM ----- PERMANENT REFERENCE MONUMENT
R.P.B. ----- ROAD PLAT BOOK	7-43-41 ----- SECTION-TOWNSHIP-RANGE	P.T. ----- POINT OF TANGENCY	● ----- PERMANENT CONTROL POINT
D.B. ----- DEED BOOK	R ----- RADIUS	R.C. ----- REVERSE CURVATURE	□ ----- FOUND PERMANENT REFERENCE MONUMENT
O.R./O.R.B. ----- OFFICIAL RECORDS BOOK	L ----- ARC LENGTH	R/W ----- RIGHT-OF-WAY	4"x4" CONCRETE MONUMENT WITH 2" ALUMINUM DISK STAMPED "PRM LB 7768" (UNLESS OTHERWISE NOTED)
PG./PG(S) ----- PAGE(S)	D ----- DELTA ANGLE	⊕ ----- CENTERLINE (TYP.) ----- TYPICAL	● ----- SET 1/2" IRON ROD AND CAP STAMPED "PRM LB 7768"
NAD ----- NORTH AMERICAN DATUM	CB ----- CHORD BEARING	C.C.R. ----- CERTIFIED CORNER RECORD	
O.S.T. ----- OPEN SPACE TRACT	C ----- CHORD		



NORTHEAST CORNER SECTION 5-43-41
NAD83 (2007 ADJUSTMENT)
C.C.R. #107592
N:884731.1793
E:896687.5695

(TIE) 5681.21'
50°15'44.46"W
5679.37'
(BASIS OF BEARING)



COORDINATES SHOWN HEREON ARE FLORIDA STATE PLANE GRID DATUM = NAD83 2007 ADJUSTMENT ZONE = FLORIDA EAST LINEAR UNITS = US SURVEY FEET COORDINATE SYSTEM = 1983 STATE PLANE PROJECTION = TRANSVERSE MERCATOR ALL DISTANCES ARE GROUND SCALE FACTOR: 1.0000 GROUND DISTANCE X SCALE FACTOR = GRID DISTANCE PLAT BEARING = GRID BEARING NO ROTATION ALL TIES TO SECTION CORNERS AND QUARTER CORNERS ARE GENERATED FROM MEASURED VALUES

NOTICE: THIS PLAT, AS RECORDED IN ITS GRAPHIC FORM, IS THE OFFICIAL DEPICTION OF THE SUBDIVIDED LANDS DESCRIBED HEREIN AND WILL IN NO CIRCUMSTANCES BE SUPPLANTED IN AUTHORITY BY ANY OTHER GRAPHIC OR DIGITAL FORM OF THE PLAT. THERE MAY BE ADDITIONAL RESTRICTIONS THAT ARE NOT RECORDED ON THIS PLAT THAT MAY BE FOUND IN THE PUBLIC RECORDS OF THIS COUNTY.

THIS INSTRUMENT PREPARED BY
GARY A. RAGER, P.S.M.
154828 STATE OF FLORIDA.
GEOPOINT SURVEYING, INC.
4152 WEST BLUE HERON BOULEVARD, SUITE 106,
RIVIERA BEACH, FLORIDA 33404.
CERTIFICATE OF AUTHORIZATION NO. LB7768

GeoPoint Surveying, Inc.
4152 W. Blue Heron Blvd. Suite 106
Riviera Beach, FL 33404
Phone: (561) 444-2720
www.geopointsurvey.com
Licensed Business Number LB 7768